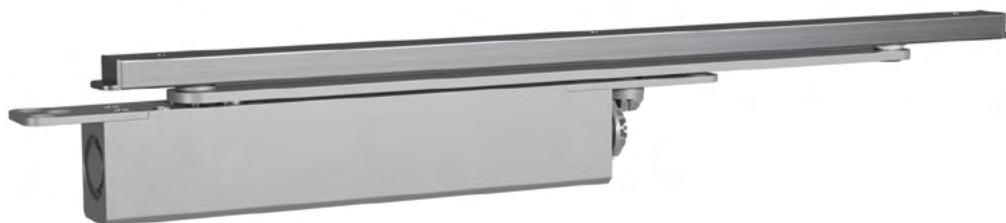


## DC850

Concealed door closer with Cam-Motion® technology and guide rail – for single leaf doors, size 2-4

Please adapt the products according to your regional portfolio aligned with the DC PU.



DC850 with guide rail G896, silver, EV1

**Cam-Motion® technology** creates rapidly decreasing opening force without losing fire or smoke protection compliance

Concealed into the door leaf or transom profile, DC850 delivers high performance to support all building users without diluting the impact of your entrance designs. The 20 mm guide rail version offers great compatibility with different mounting options. The rapidly decreasing opening force of Cam-Motion technology ensures doors open with less effort.

- Certified in compliance with EN 1154, size 2-4
- Suitable for fire and smoke protection doors
- For single leaf doors up to 1100 mm width
- Barrier-free according to DIN 18040 and CEN/TR 15894

### Colours

■ Silver, EV1

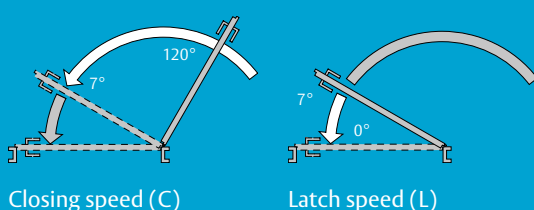
### Features

- Can be used for left- and right-handed doors
- Closing and latch speeds can be raised and lowered independently
- Adjustable power sizes simplify specification
- Durable, top-facing metal valves make adjustments easy and reliable
- Consistent performance in a wide range of temperatures

### Guide rails and accessories

- **G896** slim concealed guide rail (20 mm)
- **G897** standard concealed guide rail (29 mm)
- **A184** mechanical hold-open device for G896, **A278** mechanical hold-open device for G897, with adjustable hold-open force, keeps doors open at an angle between 50° and 100° (not approved for use on fire and smoke protection doors)
- **A182** mechanical opening damper for G896, **A279** mechanical opening damper for G897, continuously adjustable up to an opening angle of max. 100° (does not replace door stop)
- **6009450** profile mounting kit for G896, **6009451** profile mounting kit for G897, L-pieces for end of guide rail to be fitted on profile doors

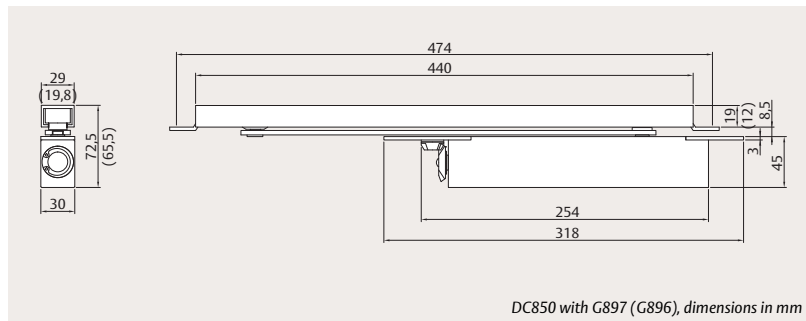
### Independent adjustment of closing and latch speeds



## DC850

## Technical attributes and certification

Please adapt the products according to your regional portfolio aligned with the DC PU.



Scan the QR code  
to watch the  
installation video



## Technical attributes

Closing force	EN size 2-4
Maximum leaf width	1100 mm
Minimum leaf thickness	34 mm
Closing speed (C)	Variable between 120° and 7°
Latch speed (L)	Variable between 7° and 0°
Maximum opening angle	~120°
Door system	Single leaf
Handing	Left- / right-handed
Mounting options	Concealed into door leaf
Force adjustment	Yes
Height adjustment	No
Corrosion resistance	Grade 3 (96 hours)
Dimensions (H x D x L)	45 x 30 x 254 mm



Visit [assaabloy.com](https://assaabloy.com) to  
download all relevant  
product literature



## Certification and testing

Certified in compliance with	EN 1154
CE classification	3   8   2-4   1   1   3
CE / UKCA mark	Yes
Suitable for fire and smoke protection doors	Yes
Barrier-free according to	CEN/TR 15894 DIN 18040
Third-party verified EPD	ISO 14025, EN 15804



## DC850

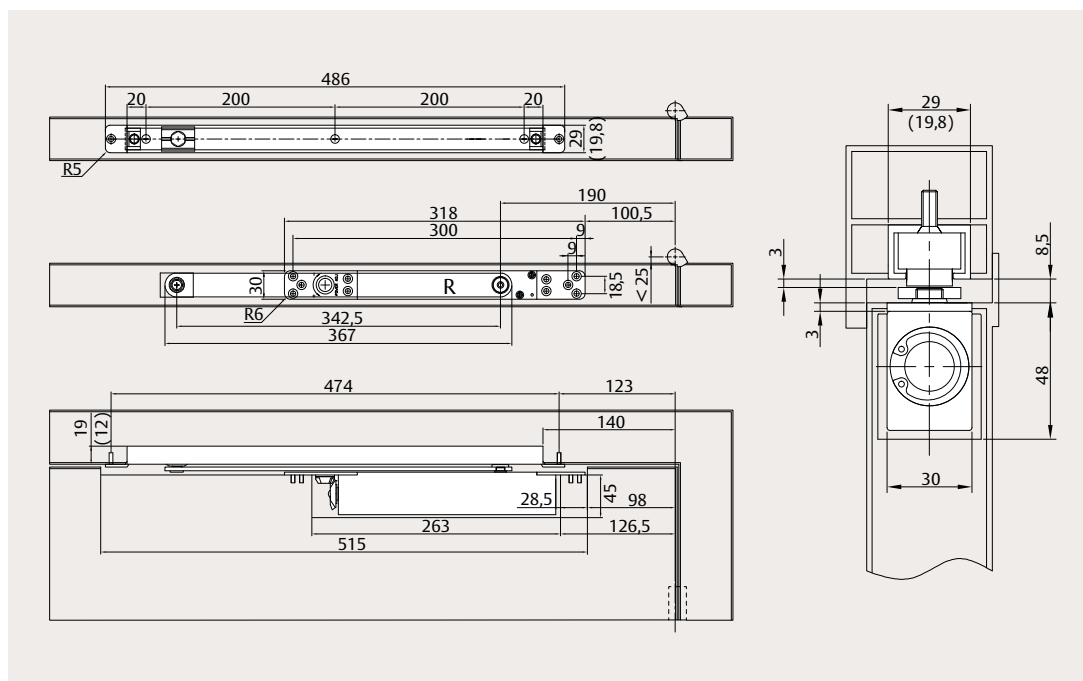
### Mounting dimensions

Please adapt the products according to your regional portfolio aligned with the DC PU.

#### Leaf mounting on metal door

with G897 (G896)

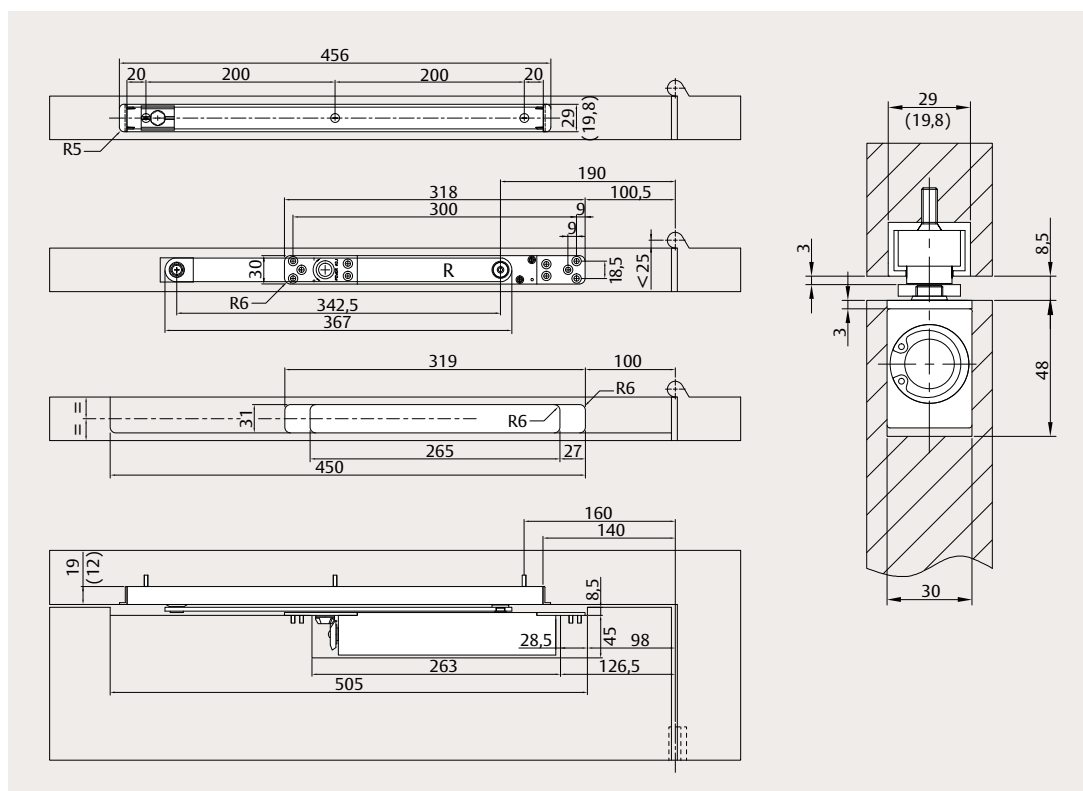
The drawing illustrates  
installation on right-handed  
doors. For left-handed doors,  
it is the reverse.



#### Leaf mounting on timber door

with G897 (G896)

The drawing illustrates  
installation on right-handed  
doors. For left-handed doors,  
it is the reverse.



## DC850

## Order information

## EMEA MASTER

Please adapt the products according to your regional portfolio aligned with the DC PU.

**Door closers**

DC850, EN size 2-4, silver, EV1	DC850-----EV1-
DC850, EN size 2-4, incl. guide rail G896, silver, EV1	DC850---1--EV1-

**Guide rails**

Concealed guide rail G896, 20 mm, incl. end caps	DCG896-----EV1-
Concealed guide rail G897, 29 mm, incl. end caps	DCG897-----EV1-

**Accessories**

Mechanical hold-open device A184 for G896	DCA184-----
Mechanical hold-open device A278 for G897	DCA278-----
Mechanical opening damper A182 for G896	DCA182-----
Mechanical opening damper A279 for G897	DCA279-----
Profile mounting kit G896 (L-pieces for end of guide rail to be installed on profile doors)	DCSP-6009450
Profile mounting kit G897 (L-pieces for end of guide rail to be installed on profile doors)	DCSP-6009451

DC850



G896



G897



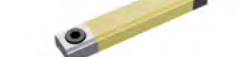
A184



A278



A182



A279

